

*Steam Products By*

★★★★★  
**GENERAL BOILER**  
*PACKAGED INDUSTRIAL BOILERS*

**ELECTRIC BOILERS**  
RESISTANCE ELEMENT DESIGN

**Models: GE-12 TO GE-120**  
12 thru. 120 kWh, 40 to 390 Lb/Hr  
(18 to 177 Kg/r)

**FEATURES:**

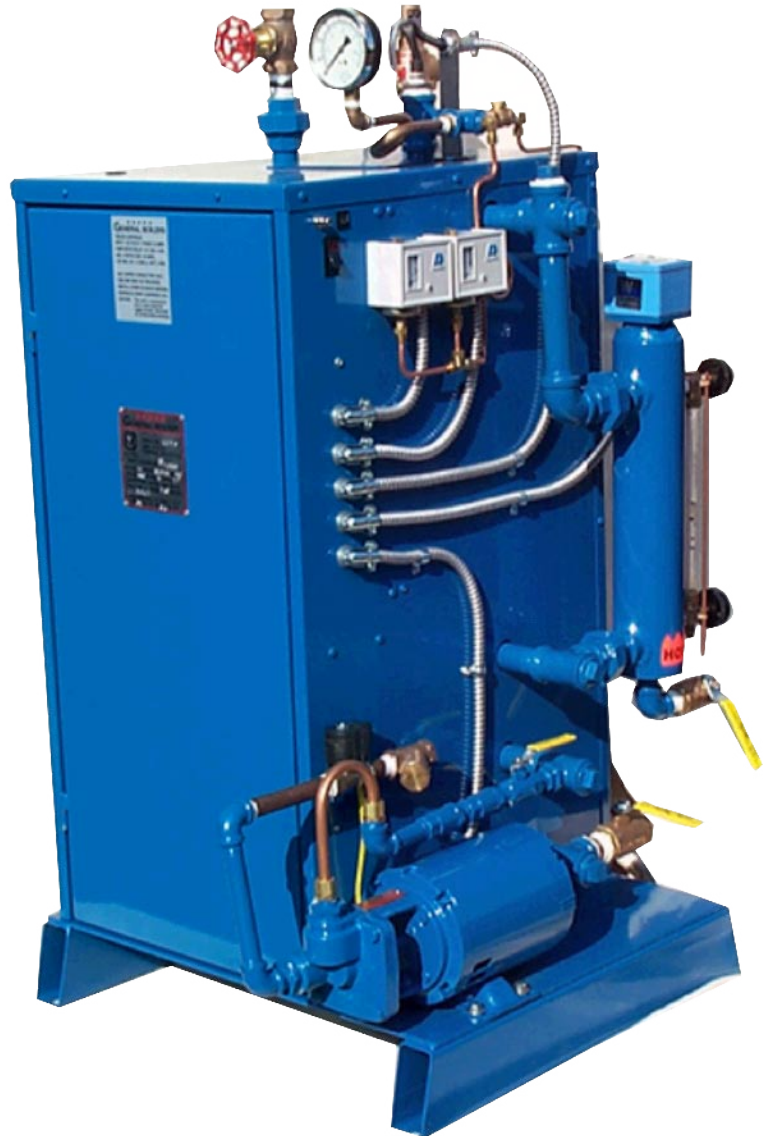
Vertical Design,  
Flanged Heating Elements  
Power: 208, 240 or 480 Volts (other)

Steam 15,100,125, 150, 250 PSI  
Carbon Steel Std.  
Available in Stainless Steel to 100 PSI

**REDUCES ENERGY COST:**

Large capacity insulated pressure vessel  
Assures higher efficiencies to 98%

- Available For Hot Water 30-250 PSI  
Low & High Temperatures
- Std boiler 100 PSI (80 PSI Oper.)
- Available for Pressures to 400 PSI



ASME, NAT'L BOARD, CSD1, LISTED: ETL-UL/ANSI Certified

**GENERAL BOILER CO. INC.**

STEAM EQUIPMENT CO. • [WWW.GENERALBOILER.COM](http://WWW.GENERALBOILER.COM)

1546 East Adams Blvd., Los Angeles, CA 90011

PHONE (323) 233-1005 FAX (323) 233-1425